

WHOI Research and Observatories in the MAB

Glen Gawarkiewicz, WHOI

QuickTime™ and a TIFF (LZW) decompressor are needed to see this picture.

Martha's Vineyard Coastal Observatory

ORION Pioneer Array Shelfbreak Observatory

WHOI Endurance Line

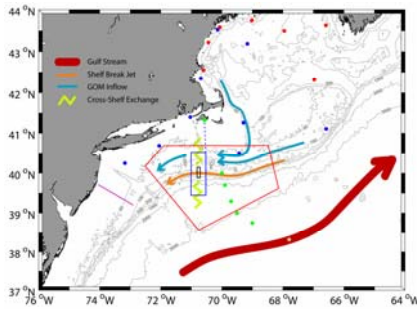
WHOI Outer Cape Cod AUV/Mooring Line

Martha's Vineyard Coastal Observatory



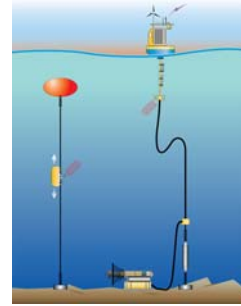
H. Sosik, Director J. Trowbridge, COSMOS

ORION Pioneer Array: Shelfbreak Observatory



Pioneer Array
— Mesoscale Array (Gliders)
— Adaptive Array (AUV's)
— Frontal Array (Mooredings)

Existing Observational Assets
• NDBC • CLIMODE
• GoMOOS • Rutgers glider
• Line W



Self-Powered Moorings with
Docking station for AUV

Gawarkiewicz, Plueddemann

Mobile- Pioneer Array could be deployed in any region

REMUS 600 AUV

Range- 400 km
At 3 knots

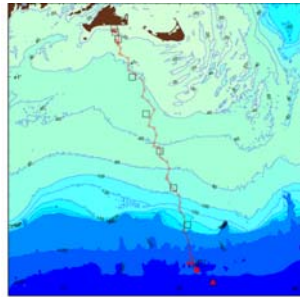
Length- 3 m

Weight- 460 lb.

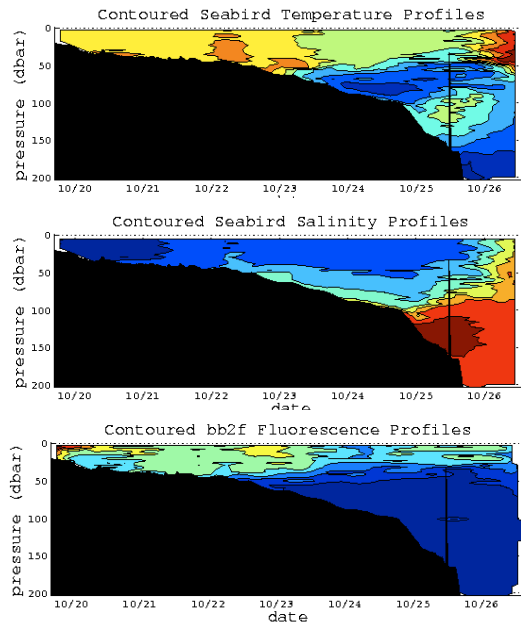
Equipped with GPS,
Iridium, Inertial
Navigation (T-24)



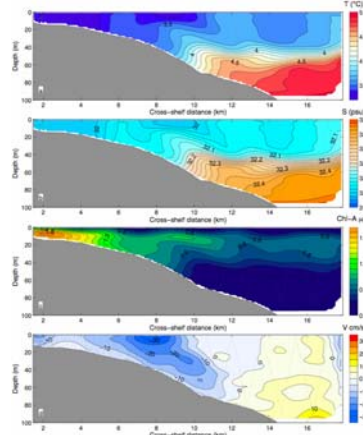
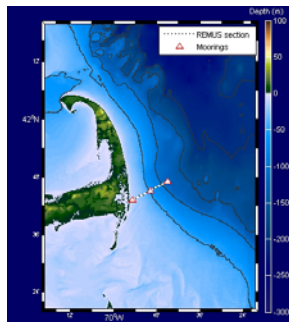
WHOI Endurance Line



D. Fratantoni
 Access to the Sea, WHOI
 Line extends offshore to
 Station W



WHOI Line East of Cape Cod



Gawarkiewicz, Shcherbina

Funding- Coastal Ocean Inst. WHOI
 SeaGrant